

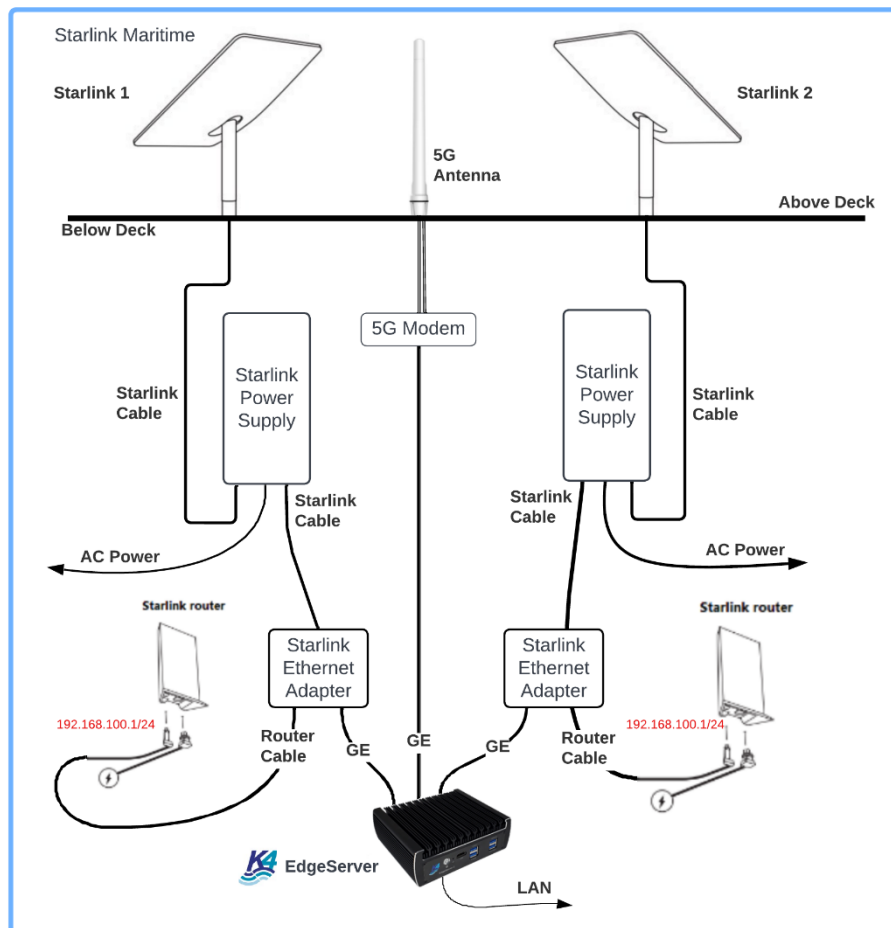
## K4 Edge with Starlink

Starlink integration with K4 Edge is simple and provides a powerful method to manage Starlink with other WAN technologies. Three examples are provided here: K4 EdgeServer with Starlink Maritime, Starlink RV and K4 5G EdgeAntenna with Starlink RV. All Edge Systems support Starlink natively.

### K4 EdgeServer with Starlink Maritime Integration

For all Starlink installations one must purchase the Starlink Ethernet Adaptor for every Dish installed.

#### ROUTER MODE



*Example of K4 5G Edge Server with Starlink Maritime – bond/prioritize Starlink usage seamlessly.*

Starlink Integration with the K4 EdgeServer is similar with either the RV or Maritime Starlink system; further the EdgeServer can support 5G/LTE, VSAT and Marina Wi-Fi Internet sources.

Plug and Play - Simple Integration

## K4 Mobility Edge Integration with Starlink

- Connect Starlink, 5G WAN, VSAT, etc. Ethernet links directly to EdgeServer.
- Starlink is setup in Router Mode (default) and utilizes the Starlink WiFi Router.
- Edge Server adds Starlink and other WAN sources and provides full SDWAN Mngt.
- Edge Server provides LAN connectivity with full QoS/DPI/Firewall Mngt.

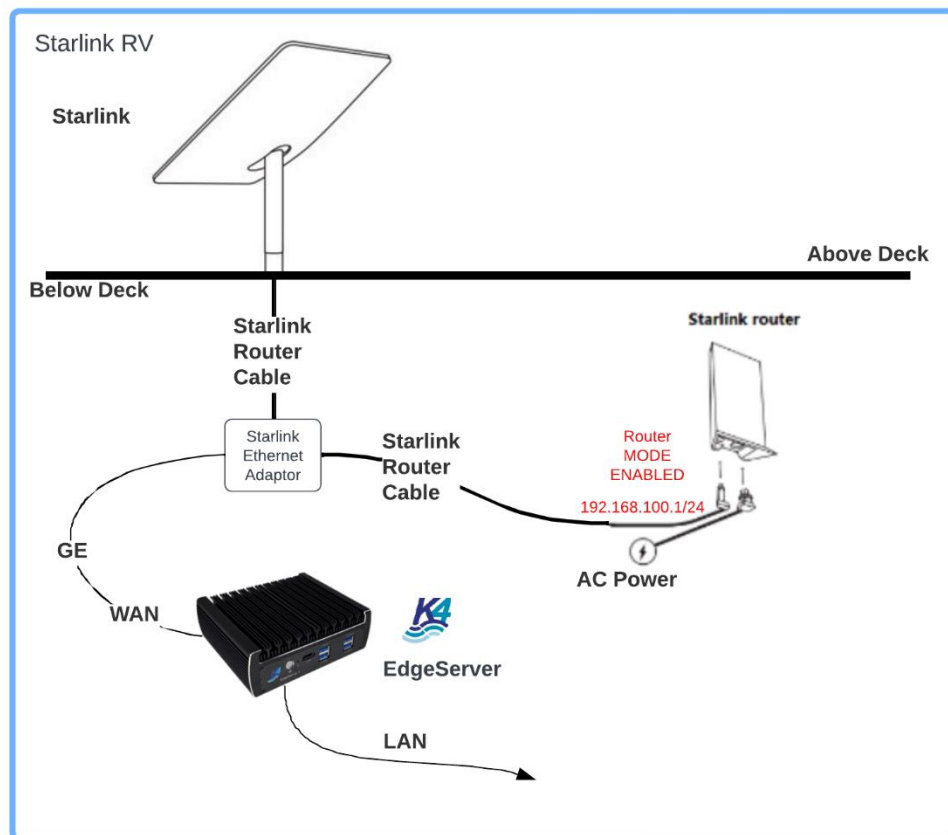
### SDWAN - Always Connected

- SDWAN WAN link bonding of Starlink/5G to optimize performance and stability.
- (or) SDWAN WAN link priority use that manages 5G cost with continuous connectivity.

### Realtime and Historical Management of Starlink Dishy

- Integrated Dashboard for Starlink Dishy.
- MobileApp and Cloud Service Portal Mngt.

## K4 EdgeServer with Starlink RV Integration



Example of K4 EdgeServer with Starlink RV.

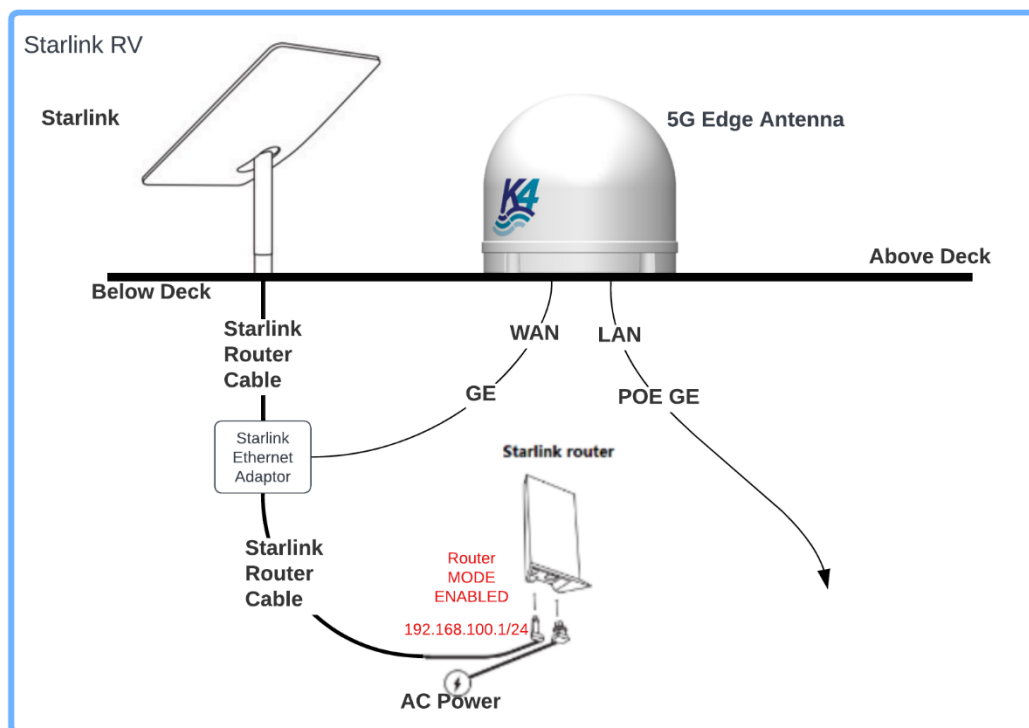
Plug and Play - Simple Integration

- Connect Starlink Ethernet links directly to EdgeServer.
- Starlink is setup in Router Mode (default) and utilizes the Starlink WiFi Router.
- EdgeServer adds Starlink as a WAN source with full SDWAN Mngt.
- EdgeServer provides LAN connectivity with full QoS/DPI/Firewall Mngt.

SDWAN - Always Connected

- SDWAN WAN link bonding of Starlink to other WAN sources optimize performance and stability.

## 5G Edge Antenna with Starlink RV Integration



*Example of K4 5G Edge Antenna with Starlink RV – Add Service Continuity with 5G and Edge.*

Plug and Play - Simple Integration

- Connect Starlink Ethernet links directly to 5G Edge Antenna.
- Starlink is setup in Router Mode (default) and utilizes the Starlink WiFi Router.

## K4 Mobility Edge Integration with Starlink

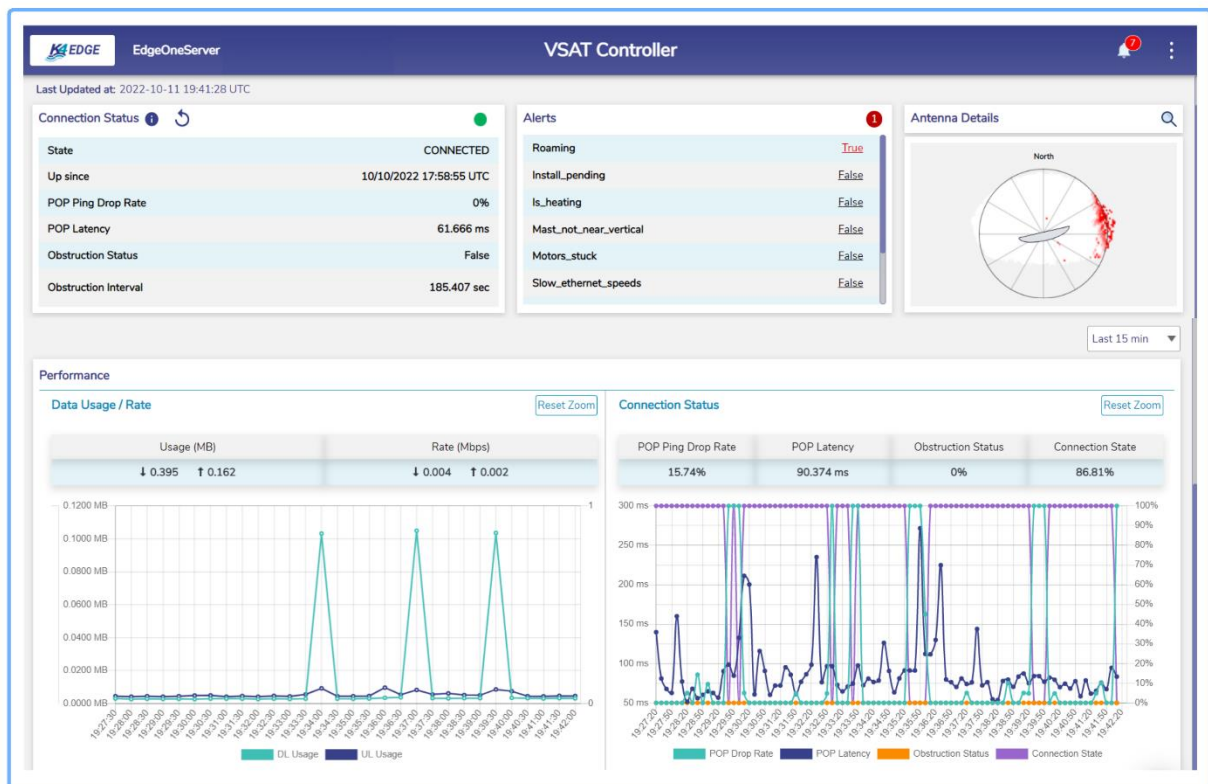
- 5G Edge Antenna adds Starlink as a WAN source with full SDWAN Mngt.
- 5G Edge Antenna provides LAN connectivity with full QoS/DPI/Firewall Mngt.

### SDWAN - Always Connected

- SDWAN WAN link bonding of Starlink/5G to optimize performance and stability.
- (or) SDWAN WAN link priority use that manages 5G cost with continuous connectivity.

### Realtime and Historical Management of Starlink Dishy – for all Edge/Starlink Options

- Integrated Dashboard for Starlink Dishy.
- MobileApp and Cloud Service Portal Mngt.



### *Edge Starlink RV Management – real-time and historical understanding of Starlink.*

All Edge support both RV & Maritime Starlink solutions; with K4 Operations and Partners supporting the installation and operation 24x7x365. Please contact K4 Mobility ([sales@k4mobility.com](mailto:sales@k4mobility.com)) for any additional information and support.

[https://www.linkedin.com/feed/update/urn:li:activity:6981965777625063424?updateEntityUrn=urn%3Ali%3Afs\\_feedUpdate%3A%28V2%2Curn%3Ali%3Aactivity%3A6981965777625063424%29](https://www.linkedin.com/feed/update/urn:li:activity:6981965777625063424?updateEntityUrn=urn%3Ali%3Afs_feedUpdate%3A%28V2%2Curn%3Ali%3Aactivity%3A6981965777625063424%29)